

Tender Proposal

200 William St
Woolloomooloo NSW 2011

16 December 2024

Matthew Guy
200 William St
Woolloomooloo
NSW 2011

Dear Matthew,

RE: 200 WILLIAM ST TILE AND CLADDING REMOVAL ONLY

We thank you for the opportunity to submit a tender for these works. We are excited by the prospect of working on this landmark building.

Canopy Constructions has reviewed the tender documentation in great detail and believe we have a very good understanding of the Principal's Project Requirements.

We sincerely hope to be a part of the 200 William St tiling and cladding removal project and look forward to building a prosperous relationship with your team.

Canopy's Capability Statement has also been appended at the rear of this document for your reference.

Please do not hesitate to contact me should you have any queries in relation to the above.

Yours faithfully



Nicholas Simms – Managing Director – Canopy Constructions Pty Ltd

PROJECT BREAKDOWN

Prelims	Qty	Unit	Rate	Cost
1 Site managerx 3 weeks		3 weeks	\$ 5,500.00	\$ 16,500.00
Project manager x 1.5 Weeks		1.5 weeks	\$ 6,000.00	\$ 9,000.00
Waste Removal		1 item	\$ 10,000.00	\$ 10,000.00
Insurance		1 item	\$ 3,000.00	\$ 3,000.00
Safety		1 item	\$ 5,000.00	\$ 5,000.00
Floor Protection/Signage		1 item	\$ 2,000.00	\$ 2,000.00
Bunnings runs		1 item	\$ 2,000.00	\$ 2,000.00
Dilapidation survey		1 item	\$ 2,000.00	\$ 2,000.00
				\$ 49,500.00
Permits / Hoardings	Qty	Unit	Rate	Cost
Council Permits and Hoardings	1		\$ 35,000.00	\$ 35,000.00
				\$ 35,000.00
Traffic Control	Qty	Unit	Rate	Cost
				\$ -
Allowance		1 item	\$ 7,000.00	\$ 7,000.00
				\$ 7,000.00
Cladding Removal				
Cladding removal via ropes		1 item	\$ 50,000.00	\$ 50,000.00
				\$ 50,000.00
Tile Removal Works				
Remove all tiling from walls		1 item	\$ 55,000.00	\$ 55,000.00
				\$ 55,000.00
Plant Hire / Scissor Hire				
Supply and install Emerclad façade coating (match colour)		1 item	\$ 5,000.00	\$ 5,000.00
				\$ 5,000.00
			SUB-TOTAL (EX GST)	\$ 201,500.00
			MARGIN (15%)	\$30,225
			TOTAL (EX GST)	\$ 231,725.00

INSURANCES

In line with the RFT requirements, please see insurances summarised below for Canopy Constructions with COC's attached.

Insurance Type	Insurer	Policy Number	Value
Public and Product Liability Insurance	Chase Underwriting	01IK709364503872	\$20,000,000
Contract Works Insurance Material Damage	QBE Insurance	01IK709364503872	\$3,500,000
Workers Compensation	iCare	116168701	\$265,000
Motor Vehicle Insurance	Budget Direct	119844422 01	Market Value

NOMINATED STAFF

Name	Position	Experience	Licences/Qualifications
Nick Simms	Managing Director	15 years building experience Director of Canopy	Bachelor of Building and Construction Diploma of Building and Construction
Michael Simms	General Manager	10 years experience Director of Canopy	Masters of Business Administration (Finance & Economics) Bachelor of Commerce (Finance and Accounting)
Tim Masman	Project Manager	7 years of building experience PM of Canopy	Bachelor of Civil Engineering (Honours) Bachelor of Commerce (Finance)
Tristin Leopuscek	Site Manager	10 years of building experience	Licensed Carpenter

WHS POLICY

Canopy Constructions is an established building contractor and project management firm specializing in the construction, renovation and alteration of commercial, industrial and residential buildings. Canopy Constructions is a boutique construction project management company which was established in the year 2015 with the objective of delivering quality by “working together building value” for its clients.

Canopy Constructions management is fully committed in the prevention of injury and ill-health by providing safe and healthy working conditions and eliminating hazards and risks so far as reasonably practicable. In carrying out its work health and safety obligations, Canopy Constructions is committed to consulting with employees, clients, suppliers and contractors on all matters that may affect the health, safety and welfare. Canopy Constructions has systems and processes in place to ensure, so far as reasonably practicable, the workplace is safe and without risk of harm to any person working in or entering the workplace by managing the foreseeable risks and opportunities.

Our WHS Policy aims to:

- Develop, implement and maintain a Canopy Constructions management system that complies with the requirements of ISO 45001 and applicable health and safety legislation, regulations, codes of practice and industry best practice;
- Achieve and maintain an accident, injury and ill-health free workplace.
- Include health and safety consideration in all business planning, design and construction activities.
- Consult with the relevant interested parties on matters involving health and safety.
- Provide a continuous program of information and training to ensure our employees and contractors work in the safest possible way.
- Ensure all systems of work used are safe and meet or exceed minimum standards.
- Set up and monitor a system for identifying, assessing and eliminating or controlling all actual and potential hazards related to the company's undertakings resulting in continual improvement of our WHS system.
- Investigate all incidents, accidents and near misses to ensure future accidents are prevented.
- Establish systems to monitor and review the company's WHS performance by setting a periodic review of WHS objectives and targets.
- Create a culture that encourages employees, contractors and other interested parties to actively participate in assisting the company to provide a safe and healthy work environment.

This policy is communicated to all personnel working for and on behalf of Canopy Constructions and is available to the interested parties as required.

WHS MANAGEMENT PLAN

Canopy Constructions is committed to ensuring the safety and wellbeing of all employees and visitors to its premises. The company has developed a comprehensive safety management plan that includes several key components.

The first component of the plan is hazard identification and assessment. Canopy Constructions has established procedures to identify potential hazards in the workplace and assess the risks associated with each hazard. The company then implements measures to mitigate or eliminate these risks, such as installing guardrails, providing personal protective equipment (PPE), and implementing safe work procedures.

The second component of the plan is employee training and education. Canopy Constructions provides employees with regular safety training and education to ensure they are aware of potential hazards and know how to work safely. The company also encourages employee participation in safety initiatives and has established a culture where safety is a top priority.

The third component of the plan is regular safety audits and inspections. Canopy Constructions conducts regular audits and inspections of its premises to identify any potential risks or hazards and ensure that all safety measures are in place and effective. The company also has established a system for reporting and investigating incidents or near-misses to identify the root cause of the problem and take appropriate corrective action.

The fourth component of the plan is the use of appropriate PPE. Canopy Constructions provides employees with the appropriate PPE for their job tasks and ensures that all PPE is properly

maintained and regularly inspected for defects. The company has also established clear procedures for handling hazardous materials and waste to minimize the risk of exposure to harmful substances.

The fifth component of the plan is a zero-tolerance policy for unsafe behaviour. Canopy Constructions requires all employees to adhere to established safety procedures and guidelines and has a zero-tolerance policy for unsafe behaviour. The company recognizes that safety is a shared responsibility and encourages all employees to take an active role in promoting a safe workplace culture.

The sixth component of the plan is emergency preparedness. Canopy Constructions has established an emergency response plan to ensure that all employees are prepared to respond appropriately in the event of an emergency. The plan includes procedures for evacuating the building, contacting emergency services, and providing first aid and medical attention as needed.

The seventh component of the plan is regular review and improvement. The safety management plan at Canopy Constructions is reviewed regularly to ensure that it remains effective and up-to-date with current safety standards and regulations. The company also encourages feedback from employees and stakeholders to identify areas for improvement and implement changes as needed.

Canopy Constructions recognizes that safety is not only important for its employees but also for the broader community. The company is committed to minimizing the impact of its operations on the environment and ensuring that its work does not pose a risk to the public.

To achieve these goals, Canopy Constructions has established procedures for managing environmental risks, such as preventing pollution, minimizing waste, and managing hazardous materials. The company also works closely with local authorities and stakeholders to ensure that its operations are in compliance with all relevant regulations and standards.

Canopy Constructions also recognizes the importance of workplace health and wellbeing. The company has established procedures to promote a healthy workplace, such as providing ergonomic workstations, encouraging regular breaks and exercise, and promoting mental health and wellbeing.

The safety management plan at Canopy Constructions is supported by a range of policies and procedures. The company has established policies for drug and alcohol testing, vehicle safety, working at heights, electrical safety, and more. These policies ensure that all employees are aware of their responsibilities and are equipped with the knowledge and tools they need to work safely.

Canopy Constructions also recognizes the importance of communication and consultation in maintaining a safe workplace. The company encourages open communication between employees and management and provides opportunities for employees to provide feedback and raise concerns. The company also consults with employees and stakeholders on safety-related matters to ensure that their concerns are heard and addressed appropriately.

To ensure the ongoing effectiveness of its safety management plan, Canopy Constructions also monitors and tracks safety performance indicators. The company collects data on incidents, near-misses, and hazards to identify trends and areas for improvement. The company also tracks employee participation in safety training and education programs to ensure that all employees have the necessary skills and knowledge to work safely.

In addition to the above components, Canopy Constructions has established a comprehensive contractor management program to ensure that all contractors working on its behalf are also committed to working safely. The program includes pre-qualification assessments, induction training, and ongoing monitoring and reporting to ensure that all contractors are meeting the same high safety standards as the company's own employees.

Canopy Constructions understands that a strong safety culture is key to achieving its business goals and objectives. By prioritizing safety and wellbeing, the company can reduce the risk of incidents and injuries, increase productivity, and enhance its reputation as a responsible and ethical business.

In summary, Canopy Constructions' safety management plan is a comprehensive framework that includes hazard identification and assessment, employee training and education, regular safety audits and inspections, appropriate use of PPE, a zero-tolerance policy for unsafe behaviour, emergency preparedness, regular review and improvement, environmental management, workplace health and wellbeing, a range of policies and procedures, communication and consultation, monitoring and tracking of safety performance indicators, and contractor management. By implementing these components and continuously striving for improvement, Canopy Constructions is committed to maintaining a safe and healthy workplace for all employees and visitors.

WHS PERFORMANCE

Canopy Constructions has an exceptional work health and safety track record, with zero first aid treatments, medical treatments, near misses, safety committee meetings, Safework notices, non-conformances or any other safety-related incidents. Our commitment to maintaining a safe and healthy workplace is reflected in our track record, which is a testament to our robust safety management systems, regular training and awareness programs, and diligent adherence to safety regulations and best practices. We are proud of our track record, and remain committed to maintaining a safe and healthy work environment for our employees and visitors.

<u>WH&S Issue</u>	<u>Total</u>
<u>First Aid Treatment [First aid only]</u>	<u>0</u>
<u>Medical Treatment [Non lost time]</u> <u>Off-site treatments [hospital or medical centre]</u>	<u>0</u>
<u>No. of Lost Time Injuries [8 hrs = 1 day]</u> <u>No. of injuries losing 1 day or more</u>	<u>0</u>
<u>No. of working days lost [Due to injury]</u> <u>Total No. of days lost, all injuries</u>	<u>0</u>
<u>Workers Compensation Claims</u>	<u>0</u>
<u>Near Miss</u>	<u>0</u>

<u>Safety Committee Meetings</u>	<u>0</u>
<u>NSW Workcover Improvement Notices</u>	<u>0</u>
<u>NSW Workcover Prohibition Notices</u>	<u>0</u>
<u>NSW Workcover Notifications</u>	<u>0</u>
<u>Non-Conformance Reports Issued</u>	<u>0</u>

RISK ASSESSMENT PROCESS

We are pleased to confirm that Canopy Construction has a robust system in place for identifying hazards and conducting risk assessments for all construction tasks. The safety of our employees, clients, and stakeholders is our top priority, and we take every necessary step to ensure that our construction activities are carried out safely and efficiently.

Our risk assessment process involves a thorough analysis of each task and potential hazards involved. We use a combination of qualitative and quantitative methods to assess the level of risk, taking into account the likelihood and consequences of each hazard. We also consider the controls that can be implemented to mitigate or eliminate the risk altogether.

The risk assessment process is carried out in collaboration with our employees, who are trained to identify hazards and report them promptly. Our employees are also trained to use and maintain personal protective equipment (PPE) and follow established safety procedures.

We document all our risk assessments and review them regularly to ensure that they are up-to-date and relevant. We also review and update our risk assessments whenever there are changes in the scope of work or work environment.

In addition to our risk assessment process, we have a range of policies and procedures in place to promote safety on our construction sites. We conduct regular safety audits and inspections, provide regular safety training for our employees, and ensure that our equipment and tools are well-maintained and serviced.

We are confident that our safety management system meets all legal and regulatory requirements and is aligned with industry best practices. We are committed to ensuring that our construction activities are carried out safely, efficiently, and with minimal impact on the environment.

FIRST AID POLICY

At Canopy Constructions, we are committed to ensuring the health and safety of our employees and visitors. As part of our commitment, we have established a first aid policy to ensure that prompt and appropriate first aid is provided in the event of an injury or illness.

Training Requirements:

All employees are required to complete first aid training as part of their initial induction process. Refresher training is also provided annually to ensure that all employees maintain their first aid skills and knowledge.

In addition, all designated first aiders are required to complete additional training to ensure they have the necessary skills and knowledge to provide effective first aid in the event of an emergency.

Responsibilities:

It is the responsibility of all employees to immediately report any injury or illness to their supervisor or designated first aider. All first aid incidents must be recorded in the appropriate documentation. Designated first aiders are responsible for administering first aid to injured or ill employees, ensuring that all first aid equipment is maintained and readily accessible, and ensuring that all first aid documentation is completed accurately and promptly.

Equipment and Supplies:

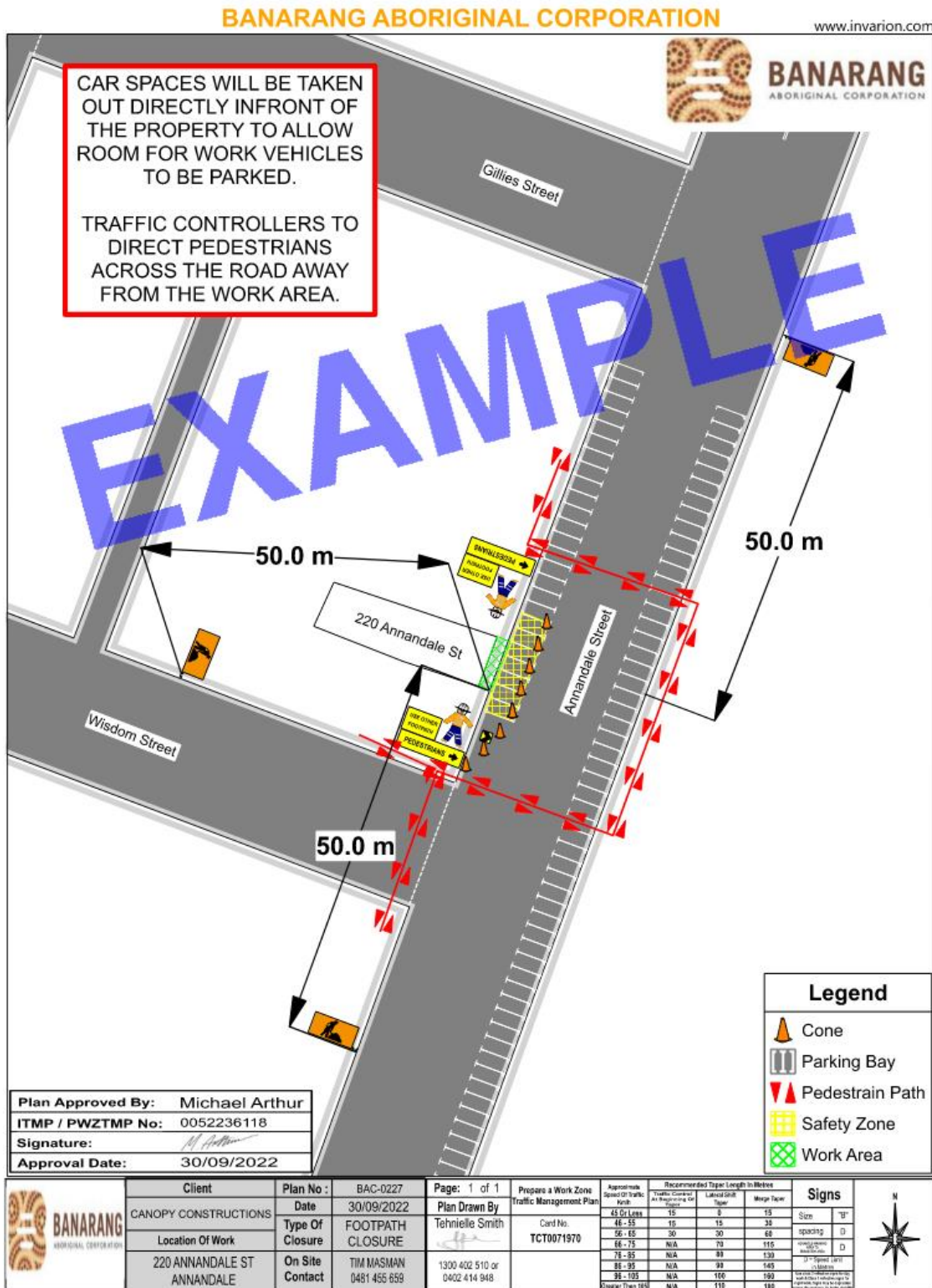
Canopy Constructions ensures that all first aid equipment and supplies are readily accessible and maintained in good working order. This includes providing first aid kits and equipment such as defibrillators, as well as ensuring that all equipment is regularly inspected, serviced, and replaced as necessary.

Emergency Response:

In the event of a medical emergency, designated first aiders are responsible for initiating the emergency response plan and contacting emergency services as required. All employees are required to follow established emergency response procedures and protocols.

In summary, Canopy Constructions' first aid policy ensures that all employees are trained in first aid, and that designated first aiders have the necessary skills and knowledge to provide effective first aid in the event of an emergency. We take the health and safety of our employees and visitors seriously, and are committed to maintaining a safe and healthy workplace.

TRAFFIC MANAGEMENT PLAN EXAMPLE



EMPLOYEE AND WORKPLACE POLICY

At Canopy Constructions, we are committed to creating a safe, respectful, and productive workplace for all of our employees. We recognize the importance of establishing clear policies and procedures to guide our operations and ensure that our employees feel supported and valued.

This employee workplace policy outlines our approach to recruitment, training and development, equal employment opportunity, anti-discrimination, unionism, consultation, and dispute resolution. We believe that these policies are critical to maintaining a positive workplace culture and enabling our employees to achieve their full potential.

We are committed to complying with all applicable laws and regulations related to labour and employment, and we strive to exceed these requirements whenever possible. We believe that our employees are our most valuable asset, and we are dedicated to providing them with the support and resources they need to succeed.

We encourage open communication, collaboration, and feedback to help us improve our policies, procedures, and workplace culture continually. We are committed to maintaining a workplace that is safe, inclusive, and respectful, and we expect all of our employees to uphold these values in everything they do.

Recruitment

Recruiting skilled and experienced workers is crucial to the success of Canopy Constructions. We recognize that the construction industry has a shortage of skilled workers, and we are committed to attracting and retaining the best talent. We advertise our job openings on various job boards, social media platforms, and trade organizations to reach a diverse pool of candidates. We also participate in career fairs and community outreach programs to engage with potential candidates.

We prioritize recruiting candidates who have experience in the construction industry, especially in our specific areas of expertise such as commercial construction, residential construction, and renovation. We also look for candidates who possess strong technical and problem-solving skills, attention to detail, and a commitment to safety.

Training and Development

Canopy Constructions believes that investing in our employees' professional development is critical to their success and our company's growth. We provide ongoing training programs to ensure that our employees have the necessary skills and knowledge to perform their jobs safely and effectively. Our training programs cover a range of topics such as workplace safety, project management, technical skills, and leadership development. We also offer apprenticeships and mentoring programs to support employees who are new to the industry or are looking to advance their careers.

Equal Employment Opportunity and Anti-Discrimination

Canopy Constructions is committed to creating a workplace that is free from discrimination and harassment. We strictly prohibit discrimination based on race, colour, national origin, religion, sex, gender identity, sexual orientation, age, disability, or any other legally protected characteristic.

In the construction industry, there is a historical lack of diversity, and we recognize the importance of creating a more inclusive workforce. We actively seek to recruit and retain employees from diverse

backgrounds, and we encourage our employees to bring their whole selves to work. We also provide training to our employees on diversity and inclusion to help foster an inclusive workplace culture.

Unionism

The construction industry has a significant presence of unions, and we respect the rights of our employees to join or not join a union. We are committed to complying with all applicable labour laws and regulations related to union activities.

We encourage open communication with our employees and their representatives to address any concerns or issues that may arise. We believe that maintaining a positive and productive relationship with unions is beneficial for our employees and our company.

Consultation

Open communication and collaboration are critical to the success of Canopy Constructions. We encourage our employees to provide feedback and suggestions to help us improve our operations and services. We have an open-door policy that enables our employees to share their ideas, concerns, and suggestions with us.

We also conduct regular surveys and focus groups to solicit feedback from our employees. We use this feedback to make improvements to our policies, procedures, and workplace culture.

Dispute Resolution

Canopy Constructions has a formal dispute resolution process that provides a fair and efficient way to address any concerns or grievances that our employees may have. We encourage our employees to bring any issues to our attention through our internal channels, such as their supervisor or HR department.

We are committed to resolving any disputes quickly and fairly, and we will not retaliate against any employee who raises a concern or participates in the dispute resolution process. We also provide our employees with access to third-party mediation services to help resolve any disputes that cannot be resolved internally.

QUALITY POLICY

Canopy Constructions is an established building contractor and project management firm specializing in the construction, renovation and alteration of commercial, industrial and residential buildings. Canopy Constructions is a boutique Construction Project Management company which was established in the year 2015 with the objective of delivering quality by “working together building value” for its clients.

At Canopy Constructions, our focus has always been on the human aspect of the built environment. We are dedicated to creating spaces that people feel connected to and stimulated by spaces that enhance experiences and build value for our clients. We believe in intelligent, boutique and beautifully designed and built spaces that build value by working together with our clients at every stage of the project.

Canopy Constructions is committed to enhancing client satisfaction by assessing their needs and expectations through proactive dialogue, research, analysis and continual improvement of our business management system by setting the quality objectives and targets across various levels and functions of the organization.

By continually improving the service and solution offerings, Canopy Constructions seeks to better understand the internal and external issues, changing needs and expectations of its interested parties (including suppliers, subcontractors and other external service providers) in the delivery of services and solutions. It seeks to provide necessary resources and a conducive working environment for all personnel working for and on behalf of Canopy Constructions while ensuring it continues to comply with the applicable legal requirements and other requirements.

This policy is communicated to all personnel working for and on behalf of Canopy Constructions and is available to the interested parties as required.



ENVIRONMENTAL POLICY

Canopy Constructions is an established building contractor and project management firm specializing in the construction, renovation and alteration of commercial, industrial and residential buildings. Canopy Constructions is a boutique Construction Project Management company which was established in the year 2015 with the objective of delivering quality by “working together building value” for its clients.

We have developed and implemented Internal Management Processes (IMP) with the aim of adopting sustainable design and construction solutions, improving the environmental performance and effectiveness of the overall process of delivery of our projects. We are committed to satisfy all applicable requirements, compliance obligations, protection of environment and prevention of pollution. We will provide necessary resources to support this commitment.

Our Environment Policy strives to:

- Provide strategic direction for our IMP by considering the risks and opportunities resulting from relevant internal & external issues, environmental aspects & impacts, requirements of client & interested parties and legislative requirements;
- Develop, implement and maintain our IMP that complies with the requirements of relevant standards, applicable legislation, regulations, codes of practice and industry best practice;
- Establish systems to monitor, review and evaluate our environmental performance by setting and periodic review of IMP objectives and targets;

- Consider sustainability requirements in all our processes and services right from planning to delivery by selecting environmentally friendly materials and practices and educating our clients accordingly.
- Provide continuous program of information and training to ensure our employees, clients and external service providers actively contribute to the achievement of our IMP objectives;
- Investigate environmental incidents and near misses to ensure future incidents and near-misses can be prevented;
- Create a culture that encourages employees, clients and external service providers to actively participate and contribute to continual improvement of our IMP.

This policy is communicated to all personnel working for and on behalf of Canopy Constructions and is available to the interested parties as required.

ENVIRONMENTAL MANAGEMENT SYSTEM

At Canopy, we take environmental management very seriously and understand the importance of complying with all statutory environmental requirements. To ensure compliance, we have put in place a comprehensive system that involves regular audits, risk assessments, and the use of environmentally-friendly materials and equipment.

In terms of obtaining and complying with approvals and licenses from statutory authorities, including the Environment Protection Authority, we have a dedicated team responsible for liaising with these authorities and ensuring that all necessary permits are obtained prior to commencing any works. This team also ensures that all conditions of the permits and licenses are strictly adhered to throughout the project.

To ensure adequate human resourcing, supervision, training, and monitoring of the works, we have a robust system in place that involves regular training and supervision of all employees involved in the project. This includes ensuring that all employees are aware of their responsibilities in relation to environmental management and are equipped with the necessary knowledge and skills to carry out their roles in an environmentally-friendly manner.

We understand the potential impact of our services on global warming and are committed to minimizing this impact. As such, we have implemented measures to reduce our carbon footprint, including the use of energy-efficient equipment and vehicles, and the incorporation of transport, transfer, processing, and disposal activities expressed in CO2 equivalents. We are also conscious of the impact of our services on air quality and have implemented measures to minimize air pollutant emissions as part of our service delivery process. This includes the use of low-emission equipment and the implementation of dust control measures.

In terms of water pollutant emissions, we have implemented measures to minimize discharge as part of our service delivery process. This includes the use of environmentally-friendly products and processes, and the implementation of measures to prevent contamination of waterways. We are committed to resource conservation and have implemented measures to recover resources from waste and our service delivery process. This includes the use of recycling and re-use of waste materials wherever possible. We understand the impact of waste disposal on both the environment and financial costs and have implemented measures to minimize waste production and disposal. This

includes waste minimization through recycling of waste materials and the use of environmentally-friendly disposal methods.

Overall, our company is committed to environmental management and takes a proactive approach to ensure compliance with all statutory environmental requirements. We recognize the importance of minimizing the environmental impact of our services and have implemented a range of measures to achieve this goal.

CLARIFICATIONS AND EXCLUSIONS

Clarifications

1. **Site Establishment:**
 - Site fencing, temporary site office, safety signage, and dilapidation reporting are included. However, Canopy assumes access to a designated area for temporary facilities and material storage.
2. **Approvals and Council Coordination:**
 - Canopy assumes that all required Council and statutory approvals will be in place before the commencement of specific works.
3. **Access to Site:**
 - Canopy assumes uninterrupted access to the worksite during normal working hours. Restrictions or delays due to external factors (e.g., Council operations or public access requirements) may impact the program and result in variations.
4. **Waterproofing**
 - Canopy has made no allowance for waterproofing works to the building once the cladding has been removed and will not take responsibility should there be any water ingress once these Cladding has been removed. Typically cladding is re installed immediately after removal to avoid these issues

Exclusions

1. **Consultants**
 - Canopy has excluded engaging any third-party consultants
2. **Asbestos Removal:**
 - Removal and disposal of asbestos or hazardous materials are excluded unless otherwise specified in the tender documents.
3. **Existing Non-Compliances:**
 - Canopy is not responsible for rectifying pre-existing non-compliant conditions identified during works.
4. **Cranage:**
 - No allowance has been made for cranage or heavy equipment lifting.
5. **Temporary Services:**
 - Temporary water, power, or sanitary services for site operations are excluded unless specifically requested.



CERTIFICATE OF APPROVAL

No. 500-07197-Q

This is to certify that the Management System at

Canopy Constructions Pty Ltd

Of

Unit 17, 28 Barcoo Street, Roseville NSW 2069 Australia

Has been examined by assessors of QMS Certification Services
and found to be conforming to the requirements of:

ISO 9001:2015
Quality Management Systems

In respect of the following activities:

Provision of construction and project management services

This certificate is valid from 22/03/2023 to 21/03/2026

Original certification date: 22/03/2023

Issue Date: 22/03/2023

Barry Fairman

Barry Fairman, Certification Manager – QMSCS Pty Ltd

To verify the validity of this certificate please visit www.jas-anz.org/register



Accreditation Number
S1410994MA





CERTIFICATE OF APPROVAL

No. 500-07197-E

This is to certify that the Management System at

Canopy Constructions Pty Ltd

Of

Unit 17, 28 Barcoo Street, Roseville NSW 2069 Australia

Has been examined by assessors of QMS Certification Services
and found to be conforming to the requirements of:

ISO 14001:2015
Environmental Management Systems

In respect of the following activities:

Provision of construction and project management services

This certificate is valid from 22/03/2023 to 21/03/2026

Original certification date: 22/03/2023

Issue Date: 22/03/2023

Barry Fairman

Barry Fairman, Certification Manager – QMSCS Pty Ltd

To verify the validity of this certificate please visit www.jas-anz.org/register



Accreditation Number
S1410994MA





CERTIFICATE OF APPROVAL

No. 500-07197-OHS

This is to certify that the Management System at

Canopy Constructions Pty Ltd

Of

Unit 17, 28 Barcoo Street, Roseville NSW 2069 Australia

Has been examined by assessors of QMS Certification Services
and found to be conforming to the requirements of:

ISO 45001:2018

Occupational Health & Safety Management Systems

In respect of the following activities:

Provision of construction and project management services

This certificate is valid from 22/03/2023 to 21/03/2026

Original certification date: 22/03/2023

Issue Date: 22/03/2023

Barry Fairman Barry Fairman, Certification Manager – QMSCS Pty Ltd

To verify the validity of this certificate please visit www.jas-anz.org/register



Accreditation Number
S1410994MA





CANOPY
WORKING TOGETHER BUILDING VALUE

Remedial Building Solutions





Canopy Constructions
is committed to pushing
the boundaries in project
management and
delivering excellence in
every single project.





About Us

Canopy Constructions is a leading provider of high quality construction, fit-outs, refurbishment, and remedial building solutions. We specialise in services that cater specifically to the unique needs and challenges faced by live environments and multi-dwelling buildings. With our expertise and dedication to excellence, we ensure that each project receives the utmost attention and care, resulting in remarkable outcomes that meet and exceed our clients' expectations.

Working on projects of all sizes and levels of complexity, we bring a flexible approach and a diverse team that takes a seamless, multidisciplinary approach to the building process. Our extensive construction experience, proactive attitude and think-outside-the-box approach are fundamental in allowing us to deliver cost-effective, timely and high-quality results.

Our Values

TRUST AND INTEGRITY

We're committed to honesty, transparency and accountability in all of our actions.

RELATIONSHIPS AND PARTNERSHIP

Our business is built on lasting partnerships through open communication, honesty and fairness.

ATTENTION TO DETAIL

We believe in excellence and maintaining the highest standards in our products and services.

EXPERIENCE AND EXPERTISE

Our team has a wealth of experience and is made up of experts in their field. We actively encourage the continual development, training and development of our employees to help them grow and become more knowledgeable and skilled in their roles.

SAFETY

The protection and well-being of our employees, customers and other stakeholders will always be our number one priority. Through the implementation of safety protocols and procedures, providing training and resources to prevent accidents and injuries, and actively promoting a culture of safety, we maintain an impeccable safety record.

Along with delivering excellence in project management, construction, fit-outs and remedial building solutions, **Canopy Constructions** believe in cultivating lasting relationships with our team, our clients and our industry contacts. Working with us means you are working with **a company who love what they do.**



Meet the Canopy Team

Our people are our greatest asset and we pride ourselves on the quality of our team, their passion, dedication and tenacity in delivering exceptional results for our clients.



NICHOLAS SIMMS
Managing Director &
Construction Manager



MICHAEL SIMMS
Operations & Business
Development



TIM MASMAN
Project Manager



SARAH PORTER
Quantity Surveyor

Our Services

We have delivered many successful projects across all industry sectors with clients from government, commercial, civil, residential, and more.



Association Memberships

We are certified in ISO 9001, ISO 45001, ISO 14001 and are committed to upholding exceptional standards across all three pillars.



QHS Certification Services

QHS Certification Services

QHS Certification Services

Project Objectives

Delivering solutions that stand the test of time.



Canopy Constructions is the perfect partner to remediate your building.

With a wealth of experience in live environments and multi-residential buildings, Canopy Constructions understand the unique challenges of remedial building solutions.



Past Projects

Restoration of Heritage Landmark Building



SITE

Balmain Town Hall & Library

SCOPE OF WORKS



Lead Paint Stripping



HAZMAT Abatement



Metal Roof Replacement



Structural Timber Repair

Canopy Constructions proudly led the restoration of Balmain Town Hall & Library, a heritage landmark for the Inner West Council. The project included a new metal roof, roof plumbing, lead paint removal, façade restoration, fresh paint, new joinery, carpet, and lighting. Key timber roof elements were replaced, and hazardous materials safely removed.

This revitalisation preserved the building's historic charm while preparing it for modern use, ensuring it remains a central part of Balmain's cultural and civic identity for years to come.

Lead Paint Stripping & Roof Replacement



SITE

Newtown Town Hall

SCOPE OF WORKS



Lead Paint Stripping



HAZMAT Abatement



Metal Roof Replacement



Structural Timber Repair

Restoration and enhancement of Newtown Town Hall, a heritage-listed landmark, involved critical tasks to preserve its historical significance and structural integrity. This included lead paint stripping, HAZMAT abatement, structural timber repairs, and metal roof and guttering replacement. This endeavour has breathed new life into an aging asset and signifies Inner West Council's commitment to preserving Newtown Town Hall's cultural heritage and ensuring its longevity for future generations.

Concrete Spalling & Hazardous Material Abatement



SITE
HMAS Penguin



SCOPE OF WORKS

Asbestos



Concrete Spalling

A seaside building where the constant exposure to saltwater and moisture lead to the concrete façade developing cracks, flaking, and exposing the underlying steel reinforcement, compromising the structural integrity. Additionally, hazardous material in the form of asbestos and lead based paint was present throughout the building. Canopy Constructions were engaged to remedy the spalling and abate the hazardous material using industry best practice.

Waterproofing



SITE

Kent Street, Sydney



SCOPE OF WORKS

Waterproofing

A harbourside, heritage listed building, where waterproof membranes and barriers had deteriorated over the course of time in a harsh environment. Improper waterproofing of the building's foundation led to water seepage, resulting in basement flooding and structural damage. Inadequate waterproofing on balconies and terraces caused water infiltration, leading to deterioration, rotting, and potential safety hazards for occupants.

Fire Safety



SITE
Naval Museum (HMAS Kuttabul)



SCOPE OF WORKS
Fire Safety

Canopy Constructions were engaged to install wet and dry fire safety systems in a non-compliant building, to bring it up to code. Wet systems, like sprinklers, were implemented to provide immediate fire suppression, while dry systems, such as fire alarms and extinguishers, were installed to ensure early detection and containment of fires in areas where water-based suppression is unsuitable or not allowed.



**Canopy Constructions:
Working together,
building value.**



Contact Us

SYDNEY OFFICE (HEAD OFFICE)

Unit 17 / 28 Barcoo Street, Roseville 2069

info@canopyconstructions.com.au

0438 109 642

MELBOURNE OFFICE

info@canopyconstructions.com.au

0438 109 642

BRISBANE OFFICE

info@canopyconstructions.com.au

0438 109 642
